

SUPERCONCRETE

WITH APGEXTREME



THE COMPLETE RANGE OF DIAMOND TOOLS AND FLOOR GRINDING MACHINES

www.apgextreme.com

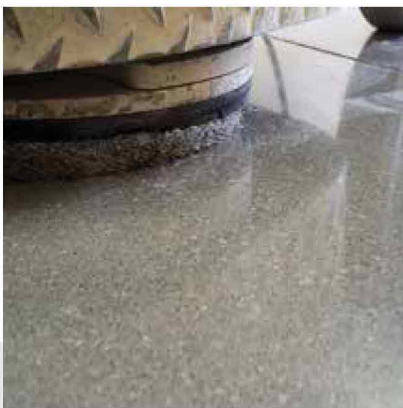
Superconcrete System

► Transform your concrete floor!

- Thanks to the continuous research of new technologies for surface treatments, the KLINDEX® Team has developed a new technique called SUPERCONCRETE® that allows you to transform any old, ugly, stained or dusty concrete floor in a perfectly smooth surface, extremely resistant, shiny, incredibly beautiful, easy to keep clean and free of dust. Applying the SUPERCONCRETE® technique on a new floor it is possible to obtain unimaginable results and comparable for aesthetics and resistance to a marble or a terrazzo floor. It is also possible to create designs and logos allowing your imagination to realize priceless artworks.

Benefits:

- **Easy to clean** since the surface has become smooth and not rough anymore.
- There is **no more dust** since the dusty outward part of the floor has been removed.
- **Resistant to traffic.** Particularly suitable for forklift truck traffic that will not leave black tyre marks on the floor and will always have an excellent grip.
- **Resistant to external agents** since it is consolidated and waterproofed.
- **It does not "scratch"**. No unsightly streaks appear like on the floors covered with resins or paints. The surface is smooth and it is not covered by waxes, resins or filming products which can get scratched.
- **Hygienic.** The smooth surface, hardened and polished, does not absorb and so it is easier to remove germs and bacteria.
- **Economical.** To transform an old floor in an aesthetically beautiful new floor, it's cheaper than any other solution. Also a polished floor compared to a rough cement floor allows considerable savings on maintenance costs, since the operating machines find less resistance and so less wear of the brushes, discs, wheels, mop, etc.
- **Dyeable.** Is it possible to add an artistic touch by coloring with impregnation colors called BETON COLOR DYE. The BETON COLOR DYE unlike paints or resins systems "do not cover the surface", do not create a film but they go in depth reacting with the "cement salts". So they do not scratch or peel like the paints and do not come off or don't make bubbles like resins.
- **Ecological.** The floor is sanded and polished without application of resins, paints or other products potentially harmful and carcinogenic. There will not be over time migrate odours and volatilization in the air of microparticles that may cause allergies or health hazardous.





The advantages:

- Dust proof. • Durable surface. • Aesthetically pleasing. • Resistant to heavy traffic and forklifts. • Easy to clean.
- Resistant to external agents. • Highly hygienic environment in the workplace. • Possibility to colour.

The technique in a few words:

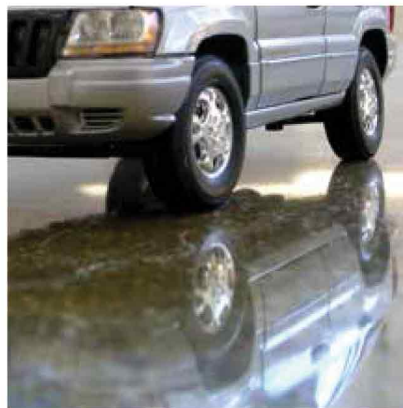
- Concrete polishing • Elimination of height variances. Consolidation of concrete with a special hardener. • This process causes a chemical reaction resulting in the hardening of the concrete. • Polishing to obtain a high finish, shine and brilliance of the floor when cleaning, you can perform cleanup operations with a reduced consumption of chemical products.

Applications:

- Retail shops. • Logistics centres. • Garage. • Commercial areas and offices. • Production areas.
- A modern environment. • Warehouses. • Parking. • Offices. • Airports. • Schools. • Showroom. • Galleries.
- Museums. • Discos. • Pub.



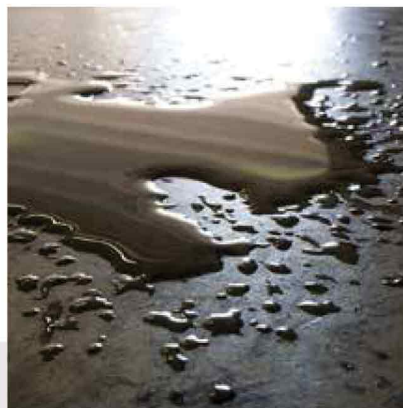
The pavement is very resistant to the passage of heavy vehicles.



Make your logo brilliant.



Water and Oil repellent.



This kind of surface is very appreciated in workplaces

■ 4 NEW METHODS FOR POLISHING THE CONCRETE FLOORS

Superconcrete® is a polishing system for concrete developed by Klindex® which turns every type of cement into a smooth, highly resistant and incredible beautiful glossy surface. With the Superconcrete® system even an old, stained and worn floor can be polished to make it look like new, extremely resistant, repellent to dirt, and easy to clean. With very few steps you will be able to polish, make waterproof, create logos, getting a nice surface like marble and strong as concrete. The Superconcrete® system offers different procedures to achieve different finishes: SUPERCONCRETE PREMIUM, FAST, HS e SUPERCONCRETE TERRAZZO EFFECT.



Superconcrete® PREMIUM

The system for mirror polishing of the concrete surfaces for excellence

- High planarity of the floor
- Mirror polishing
- Stain Resistant
- Hi-tech Look
- Wide range of colours available



Superconcrete® FAST

The fastest way to turn a normal concrete floor, new or old into a shiny, hard and resistant surface.

By using the latest technology for concrete grinding and polishing one can achieve very good results while saving time, effort and money.



Superconcrete® HS

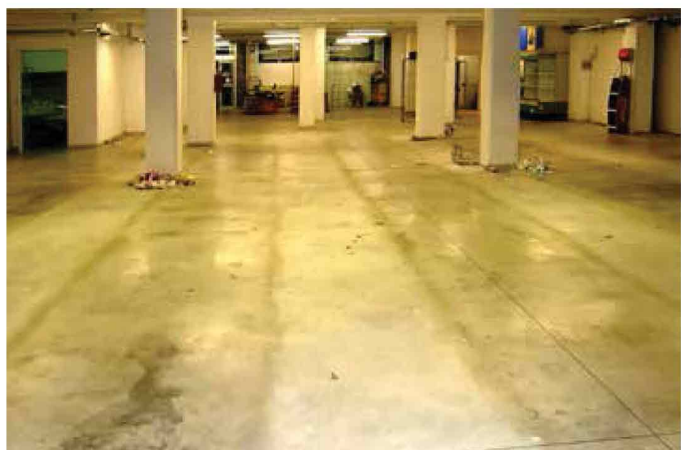
With the high-speed machine HURRIKANE and the new diamond discs KING CONC, to turn an industrial floated floor into a beautiful surface, durable, stain-resistant, glossy and easy-to-clean floor has become very easy. It is possible to polish up to 400-500 square meters per day!!



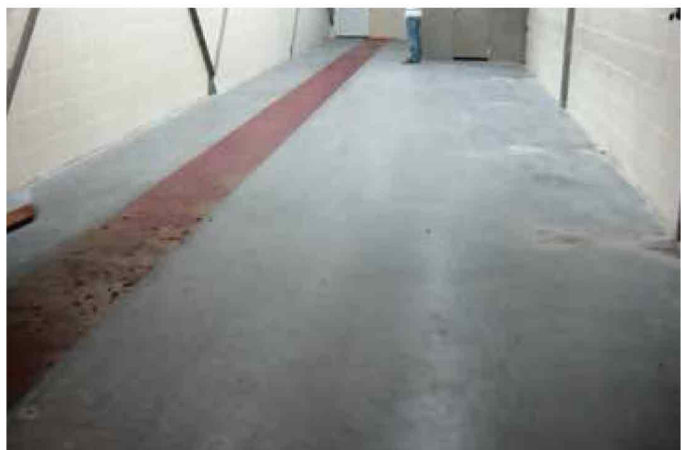
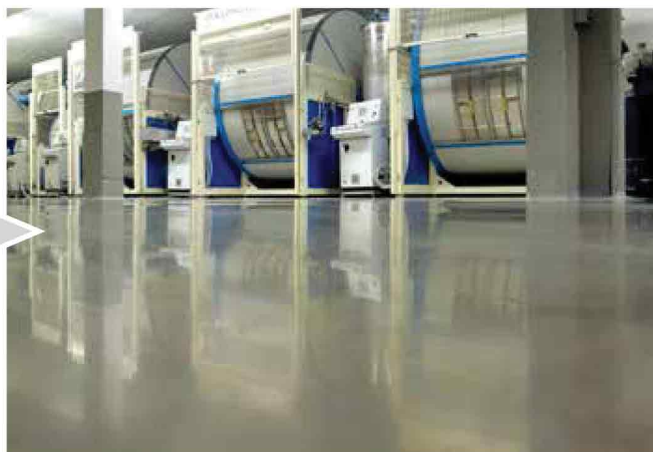
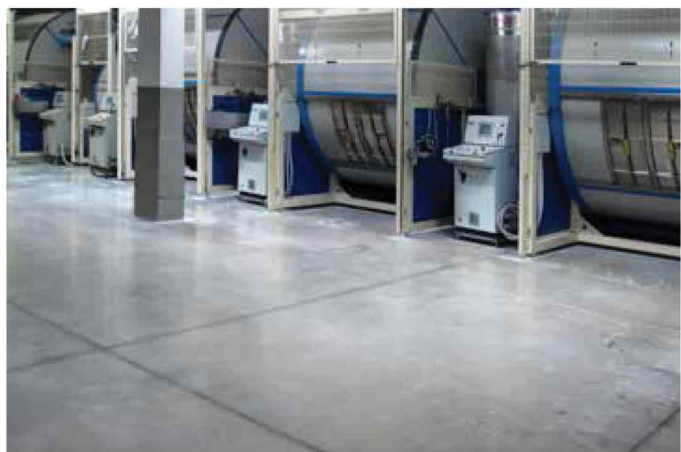
Superconcrete® TERRAZZO EFFECT

- Full exposure aggregates
- High planarity and regularity of the floor
- Variety of colour options
- Contemporary look

Before

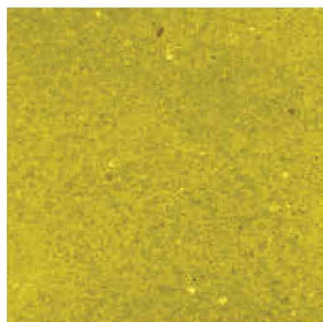


After

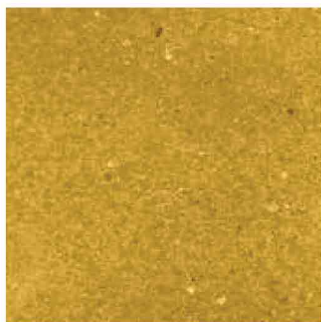




Beton Color Dye



04054 Golden Yellow UV



04055 Maize UV



04050 Copper UV



04064 Terra Cotta UV



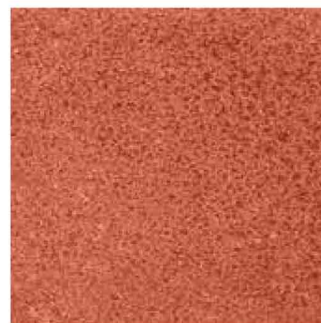
04062 Sunset Red UV



04060 Plum UV



04057 Mahogany UV



04047 Brick UV



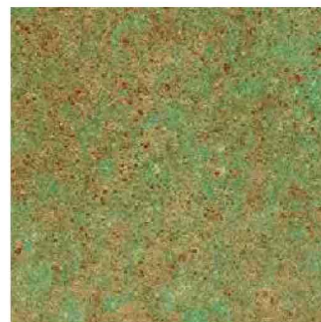
04049 Chocolate UV



04052 Earthstone UV



04053 English Leather UV



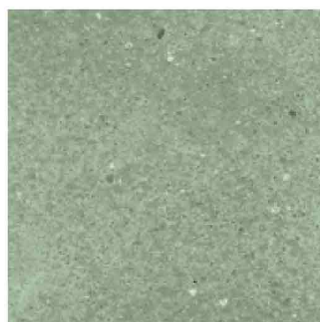
04044 Avocado UV



04063 Teal UV



04061 Sea Green UV



04059 Pear UV



04058 Ocean UV



04048 Canyon Gold UV



04045 Black UV



04046 Blu Slate UV



04051 Deep Blu UV



BETON HARDENER: is a special product to improve the hardness and quality of new and old concrete floors. Excellent also for Terrazzo and any agglomerate floor. It reacts with the salt of cement increasing the hardness and resistance to the abrasion and protecting against oils, greases and other agents contaminating.



BETON SKUDO: Penetrating stain repellent for polished concrete. It penetrates into the surfaces giving to the floor a high resistance to many external agent.



BETON SHIELD: Brighter and water-repellent. Suggested to use at the end of the work for better finishing.



BETON SHIELD PLUS: Oil-repellent. Penetrates deeply and does not create a film. Provides excellent protection against oil also on mineral based one. Recommended for areas subject to heavy traffic such as fork lift truck. Can be applied on floors polished with maximum 800 grit.



BETON GUARD LITHIUM: Oil-repellent Once applied it makes a very hard film for maximum protection. It can be applied directly but we suggest polishing with high speed machines such as HURRIKANE. Just like any "film-forming product" it requires maintenance with high speed machines to remove scratches and streaks. Very appreciated in airports, shopping malls and in large areas subject to high traffic of people.



STONE SOAP: For protecting and maintenance care of polished concrete. Improve and protect surface day by day.



BETON FILLER: is a product developed for grouting and filling up small holes and superficial cracks of the concrete floor. Fast to use because it is applied with grinding machine fitted with diamond disc LIGRO 4. Mixed with the dust created during the grinding operation it will get the same colour of the surface. It is compatible with Beton Color Dye.



BETON GROUT & CRACK REPAIR: Beton Grout is Kindex' system developed to fix very damaged concrete floors, to close large holes and deep cracks. The system is composed by three products: BETON GROUT HARDENER, BETON GROUT RESIN and micro spheres BETON GROUT GLASS BUBBLES. The main features of BETON GROUT SYSTEM are: a) The micro spheres keep the product soft and malleable, and allow to fill perfectly the area to repair. b) The resin is "expansive" permitting the subsequent grinding and polishing.



BETON COLOUR DYE: Concentrate powder colours to be dilute in 4 l of Acetone to colour concrete floors. The BETON COLOUR above showed colours are indicative. They are not RAL because they are not varnish but the result of a chemical reaction with the concrete. As a result the tonality can change according with the kind of concrete. We recommend to make a preliminary test to be sure of the colour reached.



PENETRATING AGENT: To Improve the dye penetration of the Beton Colour in to the concrete.

BETON SKUDO EFFECT

