

RESIN DIAMONDS

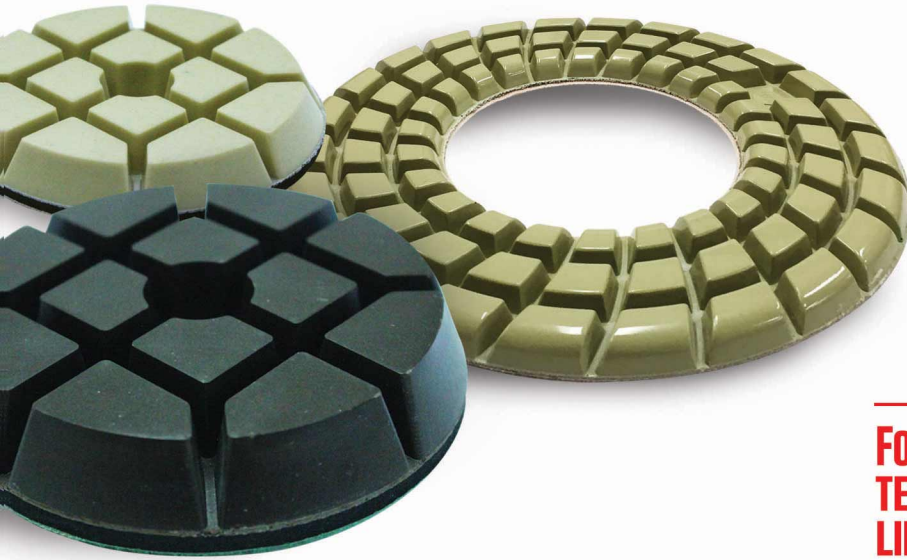
FOR GRINDING & POLISHING MACHINES



THE COMPLETE RANGE OF DIAMOND TOOLS AND FLOOR GRINDING MACHINES

www.apgextreme.com

NEW RESIN-BOND POLISHING DIAMONDS FROM APG EXTREME

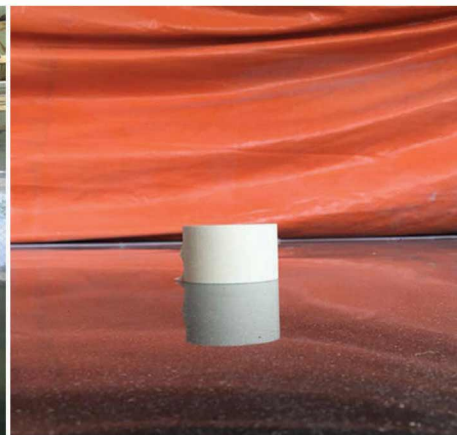
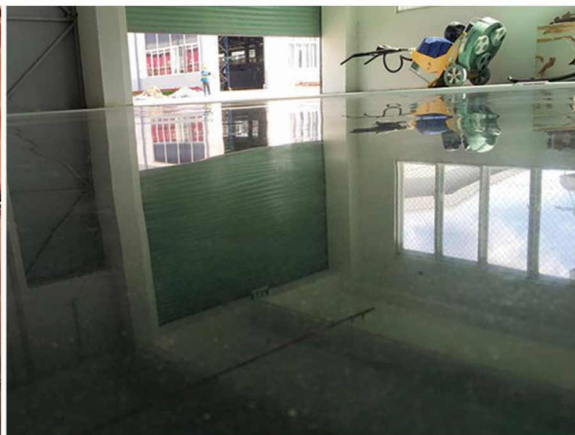


GALAXY RESINBOND DIAMONDS

**FOR POLISHING CONCRETE, NATURAL STONE,
TERRAZZO, MARBLE, TRAVERTINE AND
LIMESTONE**

APG Extreme introduces its latest range of resin-bond polishing pads for polishing concrete, natural stone, terrazzo, marble, travertine and limestone.

Galaxy polishing pads are an extra high density of material in comparison to alternative polishing pads, meaning drastically lower consumption/wear rates when compared to other pads in the market. Grits in 200 and above also create excellent gloss levels, can provide the shine and clarity at 800 grit than what is equal or superior to 1500 grit or 3000 grit from other pads.



Highly recommend for the best results

From removal of scratches with the 50 to an ultimate shine it gives with the 3000 grit, nothing competes with the Galaxy Resins. Highly recommend for the best results.



Freddy Bazouni
FRT POLISHING RESTORATIONS PTY LTD.
NSW, AUSTRALIA



**Wet cutting is efficient and economical,
dry polishing is exceptional and economical**

Lamont's Concrete & Stone Polishing use APG Extreme Galaxy Resins exclusively on our 650 Expander. Wet cutting is efficient and economical, dry polishing is exceptional and economical.



Paul Lamont
LAMONT'S CONCRETE & STONE POLISHING
NSW, AUSTRALIA

GALAXY RESINBOND DIAMONDS

Polishing pad's with raised segments that creates very high gloss and at low wear and consumption rates. Ideal for polishing all types of concrete and terrazzo flooring

GALAXY CONCRETE RESINBOND

- ✓ **Grit** 50-3000
- ✓ **Size** 75/100mm
- ✓ **Floor Type** Concrete
- ✓ **Wet/Dry** Wet & Dry



GALAXY MARBLE RESINBOND



- ✓ **Grit** 50-3000
- ✓ **Size** 75/100mm
- ✓ **Floor Type** Marble
- ✓ **Wet/Dry** Wet

Polishing pad with raised segments that creates very high gloss and at low wear and consumption rates. Ideal for polishing marble, limestone, travertine and terrazzo.

GALAXY HYBRID TRANSITIONAL

- ✓ **Grit** 50/100/200
- ✓ **Size** 75/100mm
- ✓ **Floor Type** Concrete
Terrazzo
- ✓ **Wet/Dry** Dry



Polishing pad with ceramic material for faster scratch removal from metal grits. Ideal usage in the case where the user needs to cut down on steps in honing or remove grout.

GALAXY TRIPLE ROW PAD

COMING SOON



- ✓ **Grit** 50-3000
- ✓ **Size** 200/240mm
- ✓ **Floor Type** Polished
Concrete
- ✓ **Wet/Dry** Dry

New design of a continuous ring polishing pad. Allows higher gloss produced at each grit and in less time.

For medium abrasive concrete. Cost effective with high efficiency

GALAXY FLEXI PAD

- ✓ **Grit** 50-3000
- ✓ **Size** 100/125/150mm
- ✓ **Floor Type** Polished
Concrete
- ✓ **Wet/Dry** Dry



“ The best resins money can buy

The Galaxy Resins are without doubt the best resins money can buy. For scratch removal across all surfaces they have no equal. They last forever too.



Jonathan Bonney
FLOORS WITH FLAIR PTY. LTD.
QUEENSLAND, AUSTRALIA



Projects completed with Galaxy Resinbond Diamonds



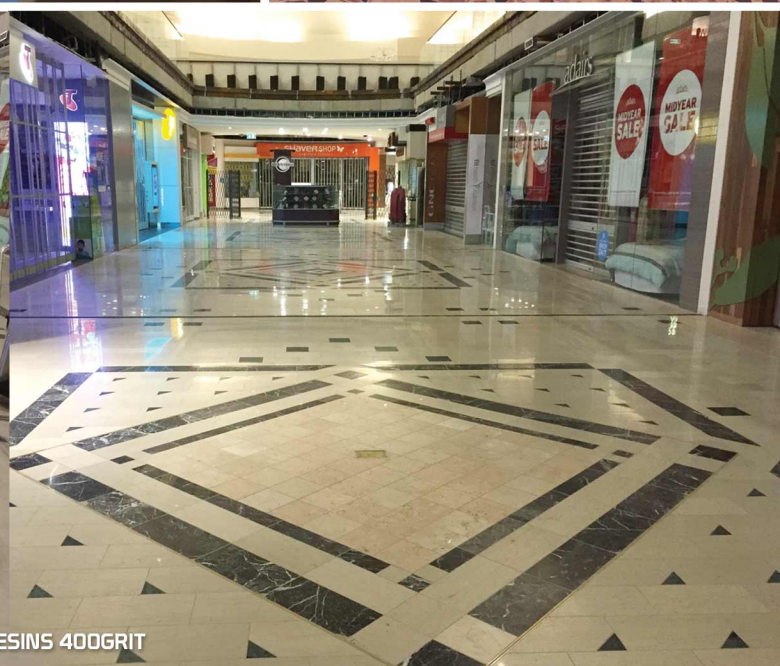
GALAXY CONCRETE RESINS 800GRIT



GALAXY CONCRETE RESINS 800GRIT



GALAXY MARBLE RESINS 400GRIT



TRANSFORM YOUR ORDINARY FLOOR INTO A REMARKABLY
POLISHED AND RESTORED FLOOR WITH
OUR PROFESSIONAL FLOOR CARE SYSTEMS